



TIBSHELF NEIGHBOURHOOD PLAN

PDF of Exhibition Information

Displayed on 14 & 15 June 2019

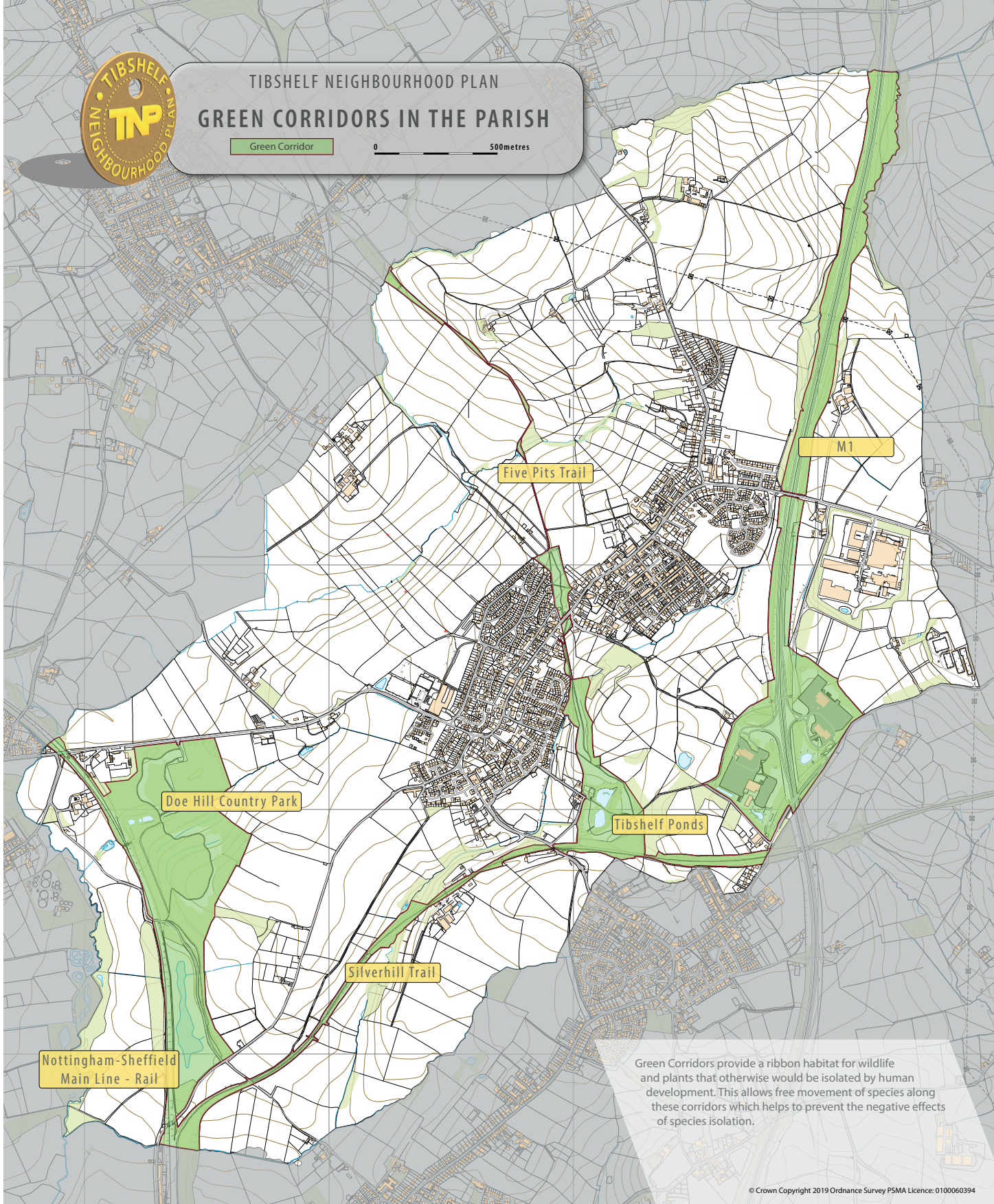
This PDF covers:
Green Corridors
Important Wildlife Areas
Vistas

4



TIBSHELF NEIGHBOURHOOD PLAN GREEN CORRIDORS IN THE PARISH

Green Corridor 0 500metres



Green Corridors provide a ribbon habitat for wildlife and plants that otherwise would be isolated by human development. This allows free movement of species along these corridors which helps to prevent the negative effects of species isolation.

Policy ENV1

Green Infrastructure

Development proposals will be expected to demonstrate how they protect and, where appropriate, enhance the existing network of multi-use green infrastructure as identified on the map above.

Where new green infrastructure is proposed, the design should reflect and enhance the area's local character, including landscapes and habitats.

Development proposals within or adjacent to the 3 green infrastructure corridors identified on the map must respect, and wherever possible, enhance the functionality and connectivity of the corridor.

Policy ENV2

Protecting and Enhancing Local Wildlife

Development proposals which conserve, enhance and incorporate local wildlife in and around them will be supported, particularly when the local wildlife forms part of a wider network or a designated Derbyshire Local Wildlife Site or Tibshelf Parish Local Wildlife Site.

Designated wildlife sites and identified corridors should be protected from inappropriate development, having regard to the wildlife value. Where opportunities exist, new habitats and design measures such as roosting spaces for birds and bats and the planting of native trees shall be created to further enhance this network.

Policy ENV3

Trees and Hedgerows

Development that damages or results in the loss of woodland or trees of arboricultural and/or amenity value or species-rich hedgerows will be resisted unless the need for, and benefits of, the development in that location clearly outweigh the loss.

Development proposals should be designed to retain, wherever possible, significant trees, trees of good arboricultural and amenity value and hedgerows.

Where the loss of trees as a result of a development proposal is unavoidable, replacement planting of trees of equivalent species and amenity value should be incorporated as part of the scheme.

Policy ENV4

Trees and Hedgerows

The sites listed below and identified on the plans are designated as Local Green Spaces:

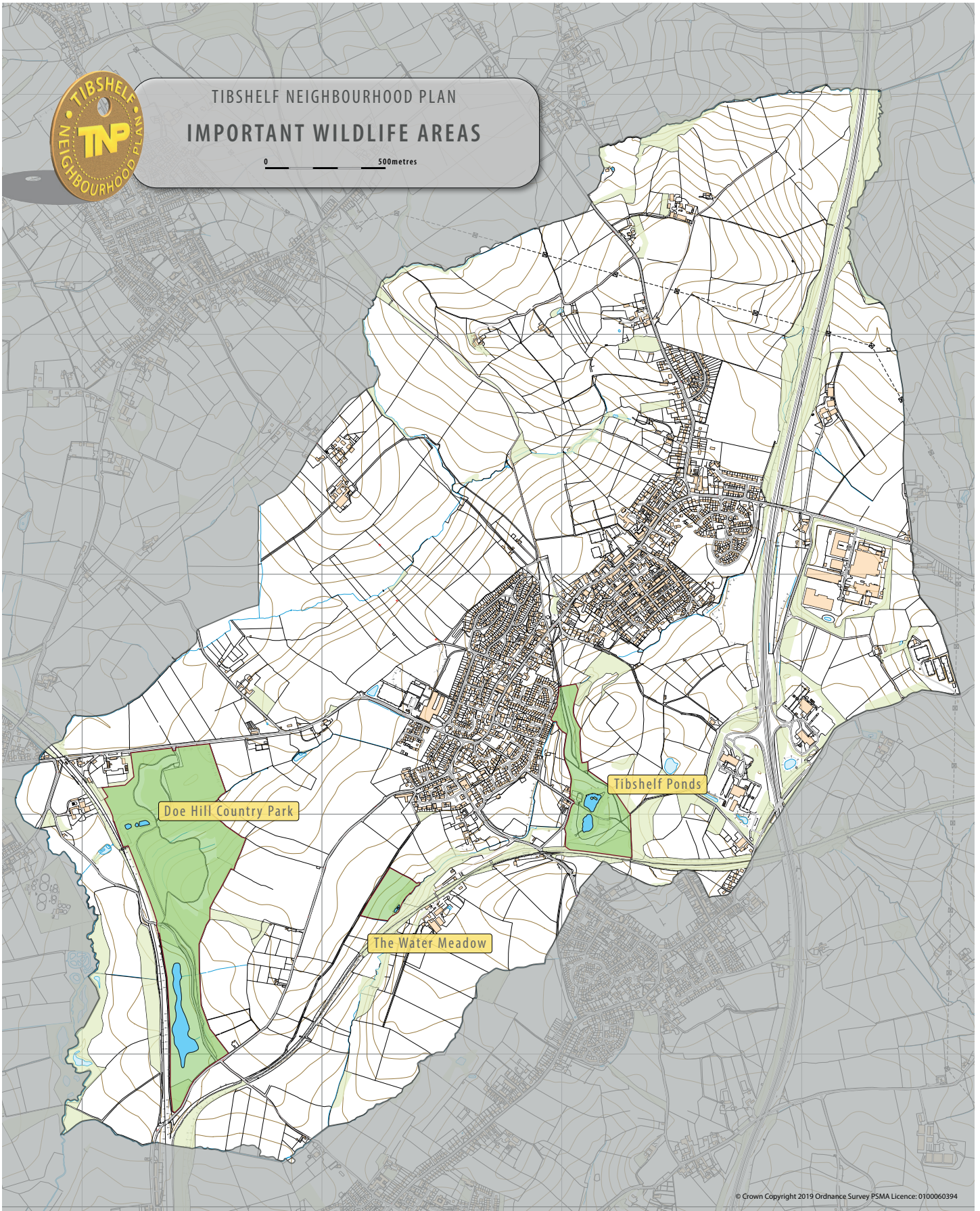
- Tibshelf Cemetery
- Playing fields at the former Comprehensive School
- Allotments located to the west of the village accessed via the road adjacent to Tibshelf Infant & Nursery School
- St John the Baptist Churchyard
- Play area off Staffa Drive
- Play area off Lincoln Close
- Play area off Poppy Gardens
- Land off Lowgates Lane known as The Water Meadow
- Doe Hill Country Park
- Green space at Derwent Drive/West Brook
- Playing field at Tibshelf Town End School

Development on land designated as Local Green Spaces will only be permitted in exceptional circumstances where it can be clearly demonstrated that the development will not conflict with the purpose of the designation.



TIBSHELF NEIGHBOURHOOD PLAN
IMPORTANT WILDLIFE AREAS

0 500metres





On The Wild Side

The map on the following page shows the wildlife sites we have identified as important within the Parish. If you know of other sites, then please let us know.

Derbyshire Wildlife Trust have evaluated the parish (see the DWT map).



Derbyshire Wildlife Trust

“ We want to help nature to recover from the decline that for decades has been the staple diet of scientific studies and news stories.

We believe passionately that wildlife and natural processes need to have space to thrive, beyond designated nature reserves and other protected sites. To achieve this it is vital that the richest wildlife sites are protected and sustained as a starting point from which nature can spread back into our wider landscapes. Despite being land locked Derbyshire Wildlife Trust must also protect marine areas for a future when our marine wildlife can thrive more widely.

Society needs this as much as our wildlife does. A healthy natural environment is the foundation for everything that is of value to people – food, water, shelter, flood prevention, health, happiness and creative inspiration. It’s the source of our prosperity and our well-being. We want to inspire people about the natural world so that they value it, understand their relationship with it and take action to protect and restore it.

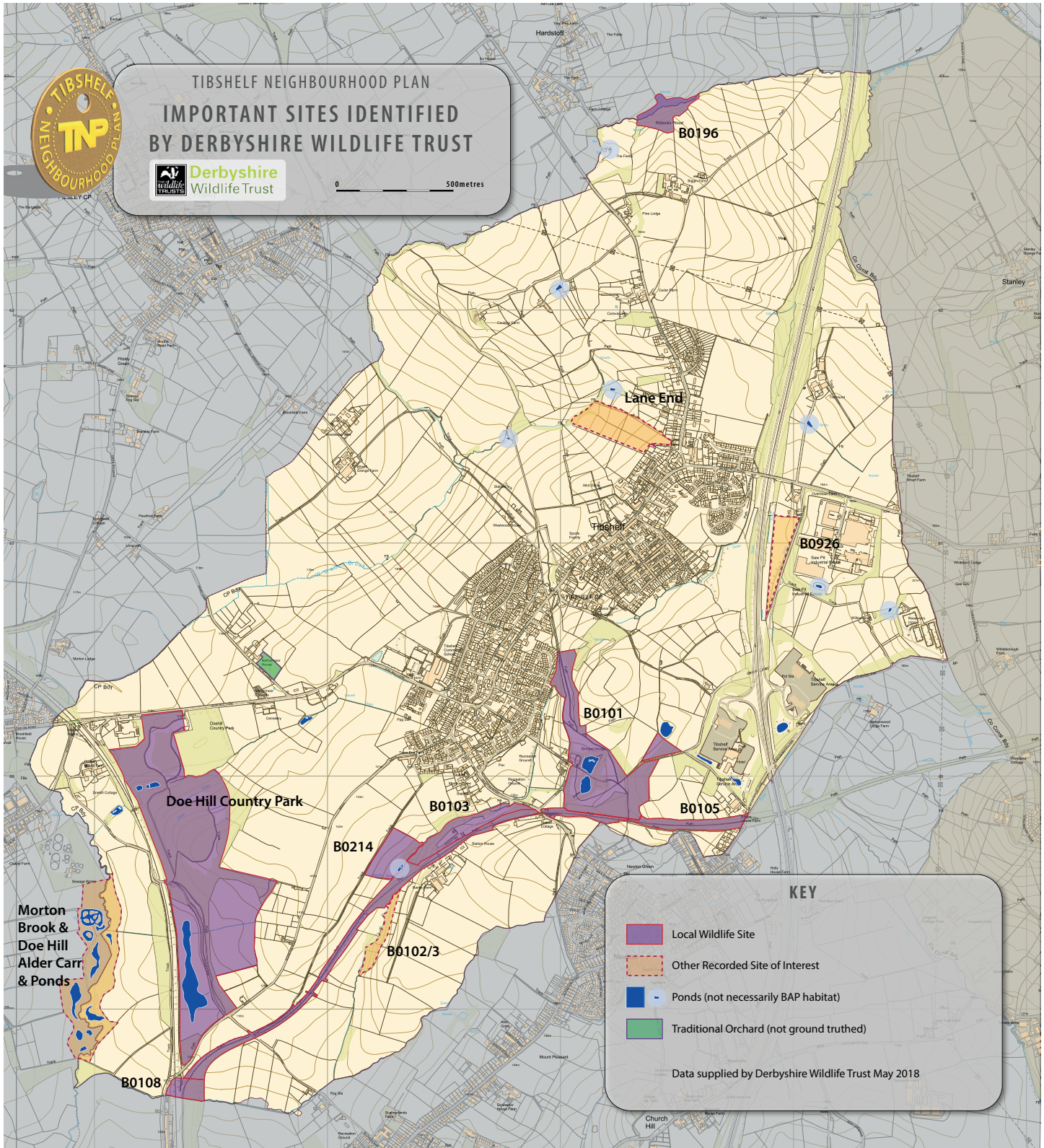
We are currently working on over 170 conservation and well-being projects, restoring species, habitats and bringing people from all walks of life closer to nature.”



TIBSHELF NEIGHBOURHOOD PLAN IMPORTANT SITES IDENTIFIED BY DERBYSHIRE WILDLIFE TRUST



0 500metres



Morton Brook & Doe Hill Alder Carr & Ponds

Doe Hill Country Park

Lane End

B0101

B0103

B0105

B0926

B0214

B0102/3

B0196

B0108

KEY

- Local Wildlife Site
- Other Recorded Site of Interest
- Ponds (not necessarily BAP habitat)
- Traditional Orchard (not ground truthed)

Data supplied by Derbyshire Wildlife Trust May 2018

Policy ENV5

Protection of Important Views

Development proposals should take account of the visual significance of the important views and vistas listed below and ensure that the impact of development on these views and vistas is carefully controlled:

- Rear of Village Hall down the Five Pits Trail
- From Hawthorne Avenue towards Hardwick
- Wetton Lane towards Trent Valley
- Sunny Bank towards the former colliery site
- Alfreton Road towards Crich
- Doe Hill Lane towards Ashover Rock (The Fabrick)

Policy ENV6

Dark Skies

Any development must limit the impact of light pollution from artificial, externally visible light sources. Any proposals to install lighting in areas of the Parish that are currently dark at night will be resisted. Dark at night is defined as more than 50m from an existing street light.

External lighting should be designed to reduce the impact on dark skies, avoiding excessive use of lighting or the unintentional illumination of adjacent areas.



TIBSHELF NEIGHBOURHOOD PLAN

VISTAS

0 500metres

- 1 Rear of Village Hall and 5 pits trail
- 2 From Hawthorne Avenue looking out towards Hardwick
- 3 Wetton Lane looking towards Trent Valley
- 4 Sunny Bank out towards colliery site
- 5 Alfreton Road towards Crich
- 6 Doe Hill Lane looking towards Ashover Rock (The Fabrick)

